

Structured Products and the Mischief of Self-Indexing

by

Geng Deng, PhD, CFA, FRM,
Craig McCann, PhD, CFA,
and Mike Yan, PhD, CFA, FRM ¹

1. INTRODUCTION

In recent years, investment banks have issued structured products linked to indexes they create rather than just linking to standardized indexes from Standard & Poor's. In doing so, the investment banks created additional difficulties for investors evaluating these investments. We illustrate the potential conflicts of interest investment banks created by linking their structured products to proprietary volatility indexes although the conflicts are present in other proprietary index-based investments as well.

In the late 1980s and early 1990s, equity-linked notes were issued by operating companies in financial distress. These mandatory convertible securities, branded PERCS, PRIDES, DECS, ACES, PEPS etc., provided rating agency equity capital and preserved deductibility of interest payments. For example, in 1992, Citicorp issued \$1 billion of 3-year Preferred Equity Redemption Cumulative Stock (PERCS) issued at a time when Citicorp had suspended its dividend and its stock price had declined from over \$30 to under \$15 in the prior two years.² At maturity, Citicorp paid the lesser of the value of one share of Citicorp stock and \$20.28. Setting aside the PERCS' \$0.30425 quarterly dividend and the expected Citicorp dividend, this payoff is the same as purchasing Citicorp at its current \$14.75 market value and selling a 3-year out-of-the-money call option with a \$20.28 strike price. This Citicorp PERCS is very similar to what later became known as reverse convertibles.

In 1994, Reynolds Metals issued \$472.5 million 4-year Preferred Redeemable Increased Dividend Equity Securities (PRIDES).³ At maturity, Reynolds Metals paid the lesser of the value

¹ © Securities Litigation and Consulting Group, Inc, 2016. Geng Deng can be reached at 703-760-6180 or at GengDeng@gmail.com. Craig McCann can be reached at 703-246-9381 or at CraigMcCann@slcg.com. Mike Yan can be reached at 703-539-6780 or MikeYan@slcg.com.

² This offering pre-dates SEC's Edgar system. A copy of the prospectus is available at www.slcg.com/OtherStructuredProductResearch/Citicorp%201992%20PERCS%20Prospectus.pdf.

³ This issue occurred in January 1994 just as Edgar launched and the offering document is available here www.sec.gov/Archives/edgar/data/83604/0000083604-94-000007.txt.

of one share of Reynolds stock and \$47.25 plus 82% of any excess above \$57.62. This maturity payoff could be achieved by purchasing Reynolds' stock at its then current \$47.25 market value, selling a 4-year at-the-money call option and buying 0.82 call options with a \$57.62 strike price. The Reynolds Metals' PRIDES are very similar to what later became known as tracking securities under brand names such as Performance Leveraged Upside Securities or PLUS.

Early equity-linked notes were also used by corporations and wealthy investors to “monetize” highly appreciated stock positions, shedding risk and deferring taxes. For example, in 1996 Times Mirror issued \$51.2 million of Premium Equity Participating Securities (PEPS) linked to the price of Netscape.⁴ Times Mirror had acquired pre-IPO Netscape shares and seen the value post-IPO Netscape shares skyrocket and start to fall back to earth. At maturity, Times Mirror paid the value of a share of one share of Netscape stock if less than \$39.25 or \$39.25 plus 87% of any excess above \$45.14. Times Mirror deferred taxes for 5 years, shed the downside risk in Netscape, kept the first 15% upside, and 15% of any further gains.

Later in the 1990s, investment banks switched from underwriting reverse convertibles and tracking securities issued by operating companies like Citicorp and Reynolds Metals linked to their own stock to issuing and underwriting structured products linked to unrelated publicly traded companies. This change in investment banks' role led to a dramatic proliferation of new structured product issuances and ever more complicated payoff structures since the investment banks were no longer limited to underwriting securities other companies wanted to issue. Investment banks could now issue notes in small denominations linked to publicly traded companies that affiliated brokerage firms could then sell through their retail sales forces.

Lehman Brothers' 1998 \$1 million Yield Enhanced Equity Linked Debt Security (YEELDS) is an early reverse convertible issued by an investment bank linked to an unrelated publicly traded company.⁵ At maturity, Lehman paid the lesser of the value of one share of Cisco Systems' stock and \$100.75. Setting aside the YEELDS' \$0.83 quarterly dividend and the expected Cisco Systems' dividend, this payoff was similar to purchasing Cisco Systems at \$66.50 and selling a 3-year call option with a \$100.75 strike price.

4 The offering circular is available here www.sec.gov/Archives/edgar/data/925260/0000950150-96-000146.txt.

See also Floyd Norris, “Times Mirror to Cash In on Netscape's Rise” *New York Times*, March 5, 1996. <http://www.nytimes.com/1996/03/05/business/times-mirror-to-cash-in-on-netscape-s-rise.html>

5 www.sec.gov/Archives/edgar/data/806085/0001047469-98-008488.txt

Investment banks acting as issuers as well as underwriters created ever more complex payoff structures late last decade. Capped and leveraged dual directional and autocallable structured products are examples of payoff structures grown so complicated that they lost readily apparent investment meaning.⁶ The complexity of these notes made regulatory oversight more difficult and allowed investment banks to sell structured products with very low issue date values. Since April 2012, the SEC partially ameliorated the problem of low-value structured products by requiring prominent disclosure of issue date fair values.⁷

As part of their evolution, investment banks became index providers as well as underwriters and issuers of structured products late last decade. Rather than using indexes from Standard and Poor's and other independent index providers, investment banks began to "self-index". As we show in what follows, issuing and underwriting structured products linked to proprietary indexes has led investment banks to mischief. Costs which had previously been built into payoff structures based on indexes which did not contain trading costs or disclosed as annual deductions from third party index returns were now being built into the index construction where they were much harder for investors and regulators to identify and quantify. We illustrate the problems with self-indexing structured products with proprietary volatility indexes from Bank of America and JP Morgan.

In the past year, regulators have brought enforcement actions related to structured products linked to proprietary indexes. In October 2015, the Securities and Exchange Commission ("SEC") settled charges against UBS over its V10 Currency Index finding that UBS did not disclose that it was applying bid-ask spread trading costs when rebalancing the currencies in its proprietary index.⁸ In June 2016, the SEC and FINRA reached settlements with Merrill Lynch over structured products linked to Bank of America's proprietary VOL Index finding that

⁶ See for example Credit Suisse's 2012 Absolute Return Barrier Securities at www.sec.gov/Archives/edgar/data/1053092/000095010312004245/dp32342_424b2-u696.htm.

⁷ <https://www.sec.gov/divisions/corpfin/guidance/structurednote0412.htm>.

⁸ The SEC press release announcing the UBS V10 Currency Index settlement is available at www.sec.gov/news/pressrelease/2015-238.html and its Order Instituting Proceedings is available at <https://www.sec.gov/litigation/admin/2015/33-9961.pdf>.

hypothetical trading costs in the calculation of the VOL Index returns and therefore the returns on the linked structured products was inadequately disclosed.⁹

2. VIX FUTURES, INDEXES AND STRUCTURED PRODUCTS

The Chicago Board Options Exchange (CBOE) first published the Volatility Index (VIX) in the early 1990s and, in 2003, reformulated it as a weighted average of S&P 500 options prices across a range of strike prices and with between 9 and 60 days to expiration.¹⁰ In 2014, the CBOE began using SPX WeeklysSM options to narrow the range of option expirations used in the calculation of the VIX to between 23 and 37 days.

The correlation between weekly changes in the VIX and weekly changes in the S&P 500 over the period from January 1, 1990 to June 30, 2016 was -0.72. The negative correlation has led some to argue that investors could hedge stock portfolios with VIX-related derivatives.¹¹ Since the VIX itself is simply a calculated index value and is not directly investable, investors gain exposure to the VIX, and therefore any potential hedging benefit, through derivatives contracts (i.e. futures and options) whose payoffs depend on future realized values of the VIX.

The CBOE began trading future contracts based on the VIX on March 26, 2004. The CBOE maintains a set of futures contracts on the VIX expiring each month for the next nine months plus five contracts expiring quarterly in February, May, August and November spanning up to 15 months in the future. VIX futures contracts settle on a Wednesday thirty days prior to the third Friday of the following month. The contract closest to expiration is referred to as the first-month contract, and later expiring contracts in sequence are second-month contract, third-month contract and so on. VIX futures prices typically increase with the remaining time to expiration. That is, it is common for contract prices to drop over time as they mature unless the whole term structure is shifting up.

The S&P 500 VIX Short-Term Futures Total Returns Index (SPVXSTR) reflects the daily returns to a fully collateralized long position in short term VIX futures contracts with interest accrual based on 91-day US Treasury rate. The daily return of the index is based on the

⁹ The SEC press release announcing the Bank of America VOL Index settlement is available at www.sec.gov/news/pressrelease/2016-129.html and its Order Instituting Proceedings is available at www.sec.gov/litigation/admin/2016/33-10103.pdf. The companion FINRA settlement press release is available at www.finra.org/newsroom/2016/finra-fines-merrill-lynch-5-million-related-return-notes-sales and AWC is available at www.finra.org/sites/default/files/Merrill_AWC_062316.pdf.

¹⁰ See Carr and Wu (2006) for an explanation of the old and new VIX calculations.

¹¹ See Deng, McCann and Wang (2012) for a discussion of VIX ETPs as a hedge for stock portfolios.

weighted average returns of the first-month and the second-month VIX futures contract. The weights on the two contracts are adjusted daily such that the weighted maturity of the included contracts is one month. Throughout each roll-over period, first-month VIX futures contracts are gradually replaced by second-month VIX futures contracts. At the end of a roll period, all the weight applied to calculate that day's return is on the second-month contract which then becomes the first-month contract and the third-month contract becomes the second-month contract for the next roll period.¹²

Similarly, the S&P 500 VIX Mid-Term Futures Total Returns Index (SPVXMTR) uses a weighted average of fourth-, fifth-, sixth- and seventh-month VIX futures contracts to estimate the returns to a fully collateralized long position in a VIX futures contract expiring in five months. Every day the index rolls over some of the weight from the fourth-month contract into the seventh-month contract while keeping the weights on the fifth-month and sixth-month contracts constant. Like the SPVXSTR, the SPVXMTR includes interest accrual based on the 91-day US Treasury rate.

In addition to the short-term and medium-term total return indices, S&P publishes the S&P 500 VIX Short-Term Futures Index Excess Return, or SPVXSP, and the S&P 500 VIX Mid-Term Futures Index Excess Return, SPVXMP, which exclude the Treasury interest that would accrue on a fully collateralized futures position.

Exchange traded products (ETPs) have been issued on both the total return and excess return versions of S&P's VIX Short Term and Mid-Term Futures Indexes. Shortly after S&P published the S&P 500 VIX Short-term Future Index and Mid-term Future Index on January 22, 2009, Barclays issued two exchange traded notes (ETNs), VXX linked to S&P 500 VIX Short-Term Futures Index and VXZ linked to S&P 500 VIX Mid-Term Futures Index, that each had a face value of \$250 million. By June 2016, Barclays had raised gross proceeds of \$11.9 billion from issuing VXX ETNs and \$1.8 billion from issuing VXZ ETNs. As of June 30, 2016, Barclays has raised gross proceeds of \$15.65 billion from issuing various ETNs linked to S&P 500 VIX Futures Indices, including leveraged and inverse ETNs.

¹² For more details see, *S&P VIX Futures Indices, Methodology*, March 2016.
<http://us.spindices.com/documents/methodologies/methodology-sp-vix-future-index.pdf>

In January 2011, ProShares issued the ProShares VIX Short-Term Futures ETF (VIXY) which tracks the S&P VIX Short-Term Futures Index and the ProShares VIX Mid-Term Futures (VIXM) which tracks the S&P Mid-Term VIX Futures Index. In October 2011, ProShares issued SVXY which is an inverse ETF and UVXY which is a twice-leveraged inverse ETF based on the S&P VIX Short-Term Futures Index. As of December 31, 2015, those four ETFs had a market exposure of roughly \$1.15 billion.¹³ In November 2011, VelocityShares and UBS issued VIX-related long-term ETNs. VelocityShares issued 20-year ETNs based on the S&P VIX Futures Indices, and UBS issued 30-year ETNs based on the S&P VIX Futures Indices.

S&P's VIX Futures Indices allow issuers to design ETPs with returns focused on at least six different dates on the VIX futures term structure plus several complicated combinations of positions on the term structure. Rather than linking structured products to the S&P VIX Futures Indices, Bank of America and JP Morgan published and used their own "proprietary" volatility indexes which are ultimately derived from the same set of S&P Index options or VIX futures contracts as are the S&P VIX Futures Indices.¹⁴

3. BANK OF AMERICA'S PROPRIETARY INDEX AND STRUCTURED PRODUCTS

Bank of America describes its VOL Index as an investable benchmark "designed to measure the return of an investment in the forward implied volatility of the S&P 500[®] Index." The VOL Index tracks the 3-month implied volatility of the S&P 500 index three and a half months forward, i.e. for the period from 3.5 months to 6.5 months in the future. Bank of America first published the VOL Index on March 23, 2010, back-filling the index to a starting index level of 250 on December 31, 2004.

¹³ www.sec.gov/Archives/edgar/data/1415311/000119312516485710/d92789d10k.htm.

¹⁴ Citigroup's Citi Volatility Index Total Return ("CVOLT") Index is a more complicated combination of twice-leveraged third-month and fourth-month futures contracts and a short position in the S&P 500. The size of the short position is determined by regression analysis to maximize the correlation between the VIX and the CVOLT. Like the S&P Total Return VIX Futures Indexes, the CVOLT Index level includes interest accruing at the 91day Treasury bill rate. Citigroup calculated the CVOLT Index starting in October 2010 and backfilled the index to 2005. Citigroup issues C-Tracks 10-year ETNs linked to the CVOLT Index in November 2010, and increased its issuance in 2012, 2013, and 2014. In total Citigroup received gross proceeds of \$132.6 million from issuing CVOLT ETNs.

Deutsche Bank's ELVIS index measures the returns to a strategy of investing in forward starting 6-month variance swaps. There do not appear to be any retail structured products or ETNs linked solely to the ELVIS or ELVIS II indexes. Deutsche Bank issued several structured products linked to a basket of indexes, which included its ELVIS II Index as one basket component. The weights of the ELVIS II Index in the baskets was always 13% or less.

The VOL Index is not calculated from VIX futures contracts like the S&P VIX Futures Indices but instead from four CBOE spot VIX calculations based on S&P 500 Index option contracts expiring in March, June, September, and December denoted as VXMAR, VXJUN, VXSEP, and VXDEC. The CBOE calculates VXMAR, VXJUN, VXSEP, and VXDEC in a similar manner to the VIX calculation although the CBOE's weighting of option prices of different expirations in its calculation of the VIX is unnecessary since VXMAR is based only on the prices of S&P options all expiring on the same day in March, VXJUN is based only on the prices of S&P options all expiring on the same day in June, and so on.

In general, a forward implied volatility between two dates in the future, t_1 and t_2 can be calculated as follows.

$$\text{Forward Implied Volatility}_{t_1 to t_2} = \sqrt{\frac{\text{Implied Volatility}_{t_0 t_2}^2 t_2 - \text{Implied Volatility}_{t_0 t_1}^2 t_1}{t_2 - t_1}}$$

For example, we can estimate 3-month implied volatility four months in the future from implied volatilities based on market prices of options expiring in seven months ($t_1 = 7$ months) and from implied volatilities based on market prices of options expiring in four months ($t_1 = 4$ months).

Following Bank of America's notation, we refer to VXMAR, VXJUN, VXSEP, and VXDEC as Index Components. The nearest Index Component is denoted IC1; second-, third- and fourth-to-nearest Index Components are referred to as IC2, IC3, and IC4, respectively. These Index Components are not forward contract prices. They are approximate implied volatilities covering the periods from the current date to expiration dates of S&P 500 Index options in March, June, September and December. IC1, IC2, IC3, and IC4 are used to estimate the quarterly Forward Implied Volatility ("FIV") between adjacent Index Components.

The nearest FIV, denoted as FIVA, is the implied volatility starting from the nearest to expiration of the four Index Components, IC1, to the second-to-nearest to expiration, IC2. Similarly, FIVB and FIVC are the forward implied volatilities starting from the second Index Component, IC2, expiration to the third Index Component, IC3, expiration, and from the third Index Component, IC3, expiration to the fourth Index Component, IC4, expiration.

$$FIVA = \sqrt{\frac{IC2^2 t_2 - IC1^2 t_1}{t_2 - t_1}}, \quad FIVB = \sqrt{\frac{IC3^2 t_3 - IC2^2 t_2}{t_3 - t_2}}, \quad FIVC = \sqrt{\frac{IC4^2 t_4 - IC3^2 t_3}{t_4 - t_3}}$$

Since the VOL Index is to measure changes in the 3-month forward implied volatility centered five months in the future, the calculation agent uses FIVA and FIVB which are centered before and after five months in the future. Denote the FIV that is centered right before the 5-month point as FIV1, and the FIV that is centered after as FIV2.

The FIV1 and FIV2 values fluctuate every day, reflecting the changing levels of the Index Components (VXMAR, VXJUN, VXSEP and VXDEC). The center of the date range covered by VOL remains 5 months in the future so, as time passes, if the Index Components' values don't change much from one day to the next, the weight on FIV1 is steadily reduced to 0% and the weight on FIV2 is steadily increased to 100%. When the weight on FIV1 drops to 0% and the weight on FIV2 has increased to 100%, the old FIV2 becomes the new FIV1 with a weight of 100% and the old FIV3 becomes the new FIV2 with a weight of 0% and the rolling from FIV1 to FIV2 starts again.

The daily return of the synthetic portfolio equals the weighted change in the FIV1 and FIV2 values less the impact of an "Execution Factor". Setting aside the Execution Factor, the value of the synthetic portfolio is equivalent to investing \$100 split between the two forward implied volatility contracts, FIV1 and FIV2, with weights rebalanced daily. For example, if the weights are 40% and 60% for FIV1 and FIV2, respectively, then \$40 is invested in FIV1 and \$60 is invested in FIV2. On the next day, the portfolio becomes more or less valuable depending on changes in the value of the \$40 invested in FIV1 and the \$60 invested in FIV2. At the end of each day, the synthetic portfolio is rebalanced to reflect the newly calculated portfolio weights which change because of the passage of time. In addition, because of daily changes in the relative value of FIV1 and FIV2 the number of units of FIV1 and FIV2 contracts which should be held to establish the desired portfolio weights changes daily.

Assume the hypothetical portfolio value increases from \$100 to \$105 because the spot VIX term structure has become steeper, and the updated FIV weights become 38% and 62%. Then the target value of FIV1 is \$39.90 (i.e. 38% of \$105), and the target value of FIV2 is \$65.10. There is no chance the portfolio starts the second day with \$39.90 in FIV1 and \$65.10 in FIV2, and thus would not require any rebalancing. Instead, each day the portfolio is rebalanced to reflect the new weights, i.e., some units of one of the hypothetical contracts are sold and units of the other contract are purchased.

In our example, if the increase in the portfolio value is solely due to an increase of the \$40 invested in FIV1 to \$45, with FIV2 unchanged, then \$5.1 of FIV1 must be sold, and the proceeds used to purchase FIV2. The proceeds - \$5.1 in our example - are subject to the Execution Factor, and the purchased FIV2 amount is reduced to \$5.025, the ratio of the proceeds and the Execution Factor (i.e., $\$5.1/1.015$). Thus at the end of the day, instead of the hypothetical portfolio being worth \$105, it is only worth 104.925, equivalent to a seven basis point (0.07%) daily charge.

Because the Execution Factor is applied to hypothetical contracts purchased each day as part of the rebalancing, the daily cost fluctuates from zero in the vanishingly rare instances when no rebalancing occurs to significantly more than seven basis points when the rebalancing required exceeds the average daily rebalancing. While the impact of the Execution Factor on any individual day is variable and uncertain, the impact over the five-year term of Bank of America's structured products is fixed and certain. Every quarter the entire portfolio value is eventually transferred from the FIV1 contract to the FIV2 contract and the entire unencumbered index value is subjected to the Execution Factor four times a year. Thus, the Execution Factor embeds a phantom transaction cost of 6% per year into the construction of the VOL Index.

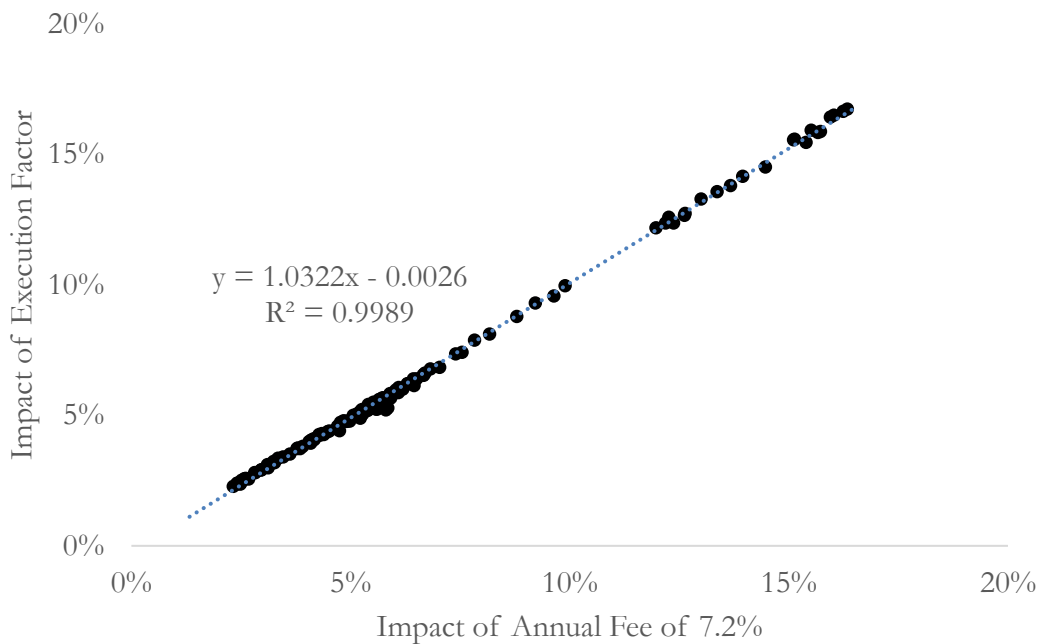
The daily return of the synthetic portfolio is multiplied by a 120% "Index Multiplier" and then increased by the 30-day Treasury-bill rate to determine the daily return of the VOL Index. The Index Multiplier magnifies the impact of the Execution Factor by 20% so the trading costs Bank of America incorporates into the volatility index calculation is 7.20% per year.

The impact on investors of Bank of America deducting 7.2% daily from the unencumbered index through the Execution Factor and then 0.75% through the Index Fee is the same as deducting 7.9% at the structured product level from an index calculated without the embedded phantom trading costs.¹⁵ To demonstrate that Bank of America was deducting 7.9% per year from the levels implied by changes in forward implied volatility we assume that instead of applying an Execution Factor, Bank of America deducted a 7.2% annual index charge daily from the thus unencumbered VOL Index. We first calculate the daily return of the VOL Index without the Execution Factor, then reduce these daily returns by 7.2% divided by 252 days.

¹⁵ $7.9\% = 1 - (1-7.2\%)*(1-0.75\%)$.

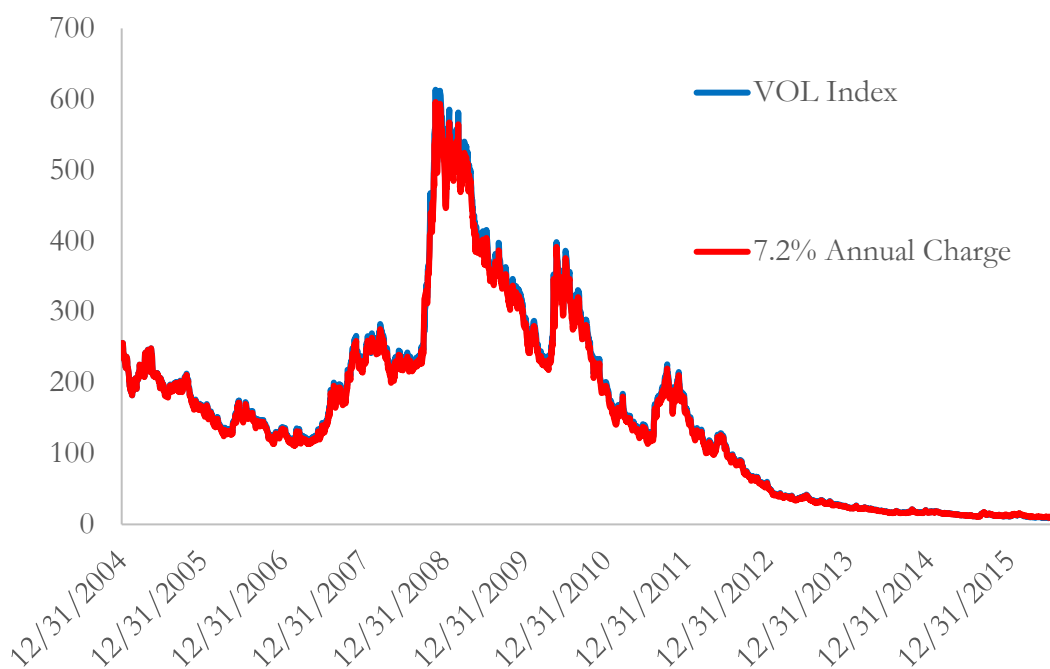
In Figure 1, we plot the impact of the Execution Factor against the impact of a 7.2% annualized deduction from the index and draw a regression line through the data. The vertical axis measures the impact of the Execution Factor on the change in the VOL Index level over rolling 12 month windows. The horizontal axis measures the impact of alternatively applying a 7.2% annual charge daily on the change in the VOL Index level over the same rolling 12 month windows. The effective annual cost of the Execution Factor and the 7.2% fixed fee are highly correlated with an R-squared value 0.9995. The complex method by which the Execution Factor is included in the index calculation has no economic substance other than to add an additional 7.2% annual deduction from the unencumbered index at the structured product level.

Figure 1: Execution Factor and 7.2% Annual Charge Have Identical Impacts.



Further, in Figure 2 we plot the VOL Index and the VOL Index without the Execution Factor but with a fixed annual fee of 7.2%. The difference between the VOL Index and the replicated VOL Index using a 7.2% annualized fee deducted daily is trivial. As of June 30, 2016, the VOL Index level is 8.97, and the index level with 7.2% fee is $9.77 - 0.8$ or 0.3% of the starting value after 12 years of daily calculations.

Figure 2: Levels of the VOL Index with and without the Execution Factor, and the Modified Index with a 7.2 % Annual Fee



The correlation between weekly changes in the VOL Index and changes in the S&P 500 VIX Mid-Term Futures Total Return Index, which is based on the prices of fourth, fifth, sixth and seventh-month futures contracts on the VIX, between December 2005 and June 2016 is 0.90. That means 81% of the variation in the VOL Index can be explained by the variation in the S&P 500 VIX Mid-Term Futures. Informed investors who wanted whatever exposure a VOL-linked structured product could provide would instead purchase Barclays' VXZ ETNs or some other S&P Mid-Term VIX Futures Index based investment.

By embedding costs in the index construction, Bank of America was able to lower the amounts it would have to pay out to purchasers of its structured products. Standard and Poor's does not incorporate any estimated transaction costs in its calculation of the S&P VIX Futures Indices referenced by other firms' ETPs. These other ETP issuers disclose an annual deduction from the S&P VIX futures indexes of 0.85% and 0.89%, significantly lower than the undisclosed but quantifiable and certain annual costs embedded in the VOL Index and charged 7.9% per year at the structured product level.

4. JP MORGAN STRATEGIC VOLATILITY INDEX

Our second example of a proprietary index used to determine structured product payoffs is JP Morgan's Strategic Volatility ("Strat VOL") Index. JP Morgan started calculating the Strat VOL Index in July 2010 and backfilled it to September 2006.¹⁶ JP Morgan calculates the Index from changes in the prices of an uncollateralized long position in the second-month and third-month VIX futures contracts and contingent short position in the first-month and second-month VIX futures contracts.

The return of a long position in second-month and third-month futures contracts and of the short position in the first-month and second-month futures contracts are determined as flows.

1. Long Return_t = $w_{1,t} \times \frac{P_{2,t}}{P_{2,t-1}} + w_{2,t} \times \frac{P_{3,t}}{P_{3,t-1}} - 1$
2. Short Return_t = $-1 \times \left(w_{1,t} \times \frac{P_{1,t}}{P_{1,t-1}} + w_{2,t} \times \frac{P_{2,t}}{P_{2,t-1}} - 1 \right)$

where $P_{i,j}$ is the price of the i^{th} -month VIX futures contract on day j . The weights $w_{1,t}$ and $w_{2,t}$ result in an approximate 60-day weighted maturity for the long futures positions and an approximate 30-day weighted maturity for the short position when included in the index.

$$w_{1,t} = \frac{\text{Days Remaining in Current Period Between Rebalancing}}{\text{Total Days in Current Period Between Rebalancing}}$$

$$w_{2,t} = 1 - w_{1,t}$$

The daily gross return of the Strat Vol Index on day t , before any fees is calculated as

3. Gross Return_t = $1 + \text{Long Return}_t - \ell_{t-1} \times \text{Short Return}_t$,
4. Return(t) = $\text{GrossReturn}(t) - \text{RebAdjAmount}(t) - 0.75\% \Delta t$
5. Reblancing Adjustment Amount(t) = $\text{Rebalancing Adjustment Factor} \times$
 $(\text{Daily Rebalancing Percentage}(t) + \text{Short Exposure Change})$

where ℓ_{t-1} denotes the short exposure determined at the end of the previous day. The short position is adjusted according to the shape of the VIX futures term structure. When the spot VIX is below a weighted average of the first- and second-month VIX futures prices on each of the

¹⁶ JP Morgan also published the Strategic Volatility Dynamic Index, which is similar to the Strat VOL Index but allocates weight to the third-, fourth-, fifth- and six-month contracts to center the long position at 4 months in the future and allocates weight to the second- and third-month contracts to center the short position at 2 months in the future. Our comment herein about the Strat Vol Index apply with only slight modifications to the JP Morgan's Strategic Volatility Dynamic Index.

three immediately preceding business days (i.e., the VIX futures term structure is upward sloping), the short exposure is increased 20% per day, up to 100%, to compensate for the negative roll yield in the long position. When the spot VIX is above the weighted average of the first- and second-month VIX futures prices on each of the preceding three business days (i.e., the VIX futures term structure is downward sloping), the short exposure is decreased 20% per day, down to 0%.

Up to this point the calculation and interpretation of the Strat Vol Index is pretty straightforward. It is simply an estimate of the excess return to a long position in a rolling 2-month VIX futures contract, supplemented by the return to a short 1-month VIX futures contract when the VIX term structure is upward sloping.

JP Morgan could have calculated the Strat Vol Index based on the Gross Return above. This is what Standard and Poor's does in calculating the various VIX Futures Excess Return Indices before adding 91-day Treasury yields to calculate its VIX Futures Total Return Indices. Barclays and other investment banks issued ETPs linked to S&P's VIX Futures Indices deducting and disclosing any fees at the structured product level. In fact, the returns to the Strat Vol can be closely replicated using two low cost, listed VIX ETPs.

To illustrate, consider a strategy of buying Barclays mid-term VIX futures ETN, VXZ, and buying VelocityShares' inverse short-term VIX futures ETN, XIV, whenever the VIX futures term structure is upward sloping. We constructed a portfolio using the short exposure ℓ_t indicator from the Strat VOL calculation to determine the weight on XIV. Our portfolio of VXZ and VIX ETNs does not track the long exposure in JP Morgan's Strat VOL Index perfectly because VXZ is centered 4.5 months out on the VIX futures term structure while Strat Vol's long position is centered 2 months out on the term structure. Nonetheless, the dynamical trading strategy we set up gives a correlation of 0.91 from the index inception to June 2016. However, the annual cost on the ETNs, at 0.89% on VXZ and 1.35% on XIV, is significantly lower than the greater than 10% annual costs JP Morgan embedded in its Strat Vol Index.

Similar to Bank of America's application of the Execution Factor, JP Morgan clips the Strat Vol Index returns each day through the application of its Adjustment Factor and Rebalancing Adjustment Amount. The Adjustment Factor is a 0.75% per annum fee applied daily. The Rebalancing Adjustment Amount is more complex but is never less than 4.8% per

year and is almost always 9.6% per year. As we will see below, JP Morgan’s “estimated value” for structured products linked to the Strat VOL Index notes is based on an index that only includes the first term, the Gross Return, and excluded to two daily deductions from the index.

Since the JP Morgan structured notes payout at maturity exactly the change in the Strat Vol Index over the term of the note, JP Morgan could apply the 0.75% fee at the structured product level as Bank of America does with its 0.75% Index Adjustment Factor and as Barclays does with the 0.85% annual fee applied to the S&P Mid-term Futures Index returns referenced by the VXX ETN.

JP Morgan’s Rebalancing Adjustment Amount is substantially more complicated than the Adjustment Factor. It includes an annual charge that is certain and a charge that varies with the amount of short exposure and with the VIX level over time. It is the sum of the Daily Rebalancing Percentage plus the Short Exposure Change together multiplied by the Rebalancing Adjustment Factor.

The Daily Rebalance Percentage on any calculation date, is the sum of the absolute value of changes in the weights on the three VIX future contracts, and the absolute changes of the short exposure, $|\ell_{t-1} - \ell_t|$. For example, if we assume there is 20 days in the rebalancing period, then as the long position is rolled the weight on the third-month will increase daily by 5% and the weight on the second-month will decrease daily by 5%. The absolute change in the weight on each the third-month and the second-month contract is 5% for a total of 10%.

On days when the weight on the short position remains 0%, the Daily Rebalance Percentage will be 10%. On days when the weight on the short position remains 100%, the daily roll from the first-month contract to the second contract adds an additional 10% to the Daily Percentage Rebalance for a total of 20%. When the short position remains 100%, daily changes in the weight on the second-month contract in the short position exactly offset changes in the weight on the second month contract in the long position. Although JP Morgan’s calculation assumes trading would equal 20% of the notional value of the contracts on such days, real world trading would only equal 10% of the notional value of the contracts. Thus, an investor replicating the Strat Vol strategy would trade much less than implied by the Daily Rebalancing Percentage.

In addition, on days when the weight on the short position is changing – whether increasing or decreasing by 20% – the absolute value of the change in the short position exposure, i.e. 20%, is added to the Daily Rebalance Percentage. JP Morgan appears to implement

hypothetical trades twice on days when the weight in the short position changes after already overstating the amount of trading necessary to adjust the long and short futures positions. Thus, Daily Rebalancing Percentage significantly overstates the amount of trading required to implement the Strat Vol strategy.

The VIX futures term structure is typically upward sloping. Table 1 reports the percentage of days from index inception date of July 30, 2010 to June 30, 2016. 83.8% of the time the weight on the contingent short position has been 100%. If we use the simplifying 20-day roll period assumption and ignore the impact of changes in the short exposure which only increases the Daily Rebalance Percentage, the average Daily Rebalance Percentage is 18.9% based on the statistics in Table 1.

Table 1: Short Exposure is Significant and Unchanging.

| | Short Exposure | | | | | | Change in Exposure | | |
|-----------|----------------|------|------|------|------|-------|--------------------|-------|------|
| | 0.00 | 0.20 | 0.40 | 0.60 | 0.80 | 1.00 | -.20 | 0 | +.20 |
| Frequency | 6.2% | 1.7% | 2.5% | 2.5% | 3.4% | 83.8% | 4.5% | 91.0% | 4.5% |

The Daily Rebalancing Amount equals the Daily Rebalancing Percentage which can range from 10% to 58% multiplied by the Rebalancing Adjustment Factor, R in Table 2. Using 0.2%, the lowest R, the Daily Rebalancing Amount is on average at least 0.038%, which is equivalent to an annual fee of 9.54% across 252 trading days.

Table 2: Rebalancing Adjustment Factor by Daily VIX level and Frequency.

| Day VIX Level | Frequency | R |
|---------------|-----------|------|
| ≤ 35 | 97.9% | 0.2% |
| ≤ 50 and > 35 | 2.1% | 0.3% |
| ≤ 70 and > 50 | 0% | 0.4% |
| > 70 | 0% | 0.5% |

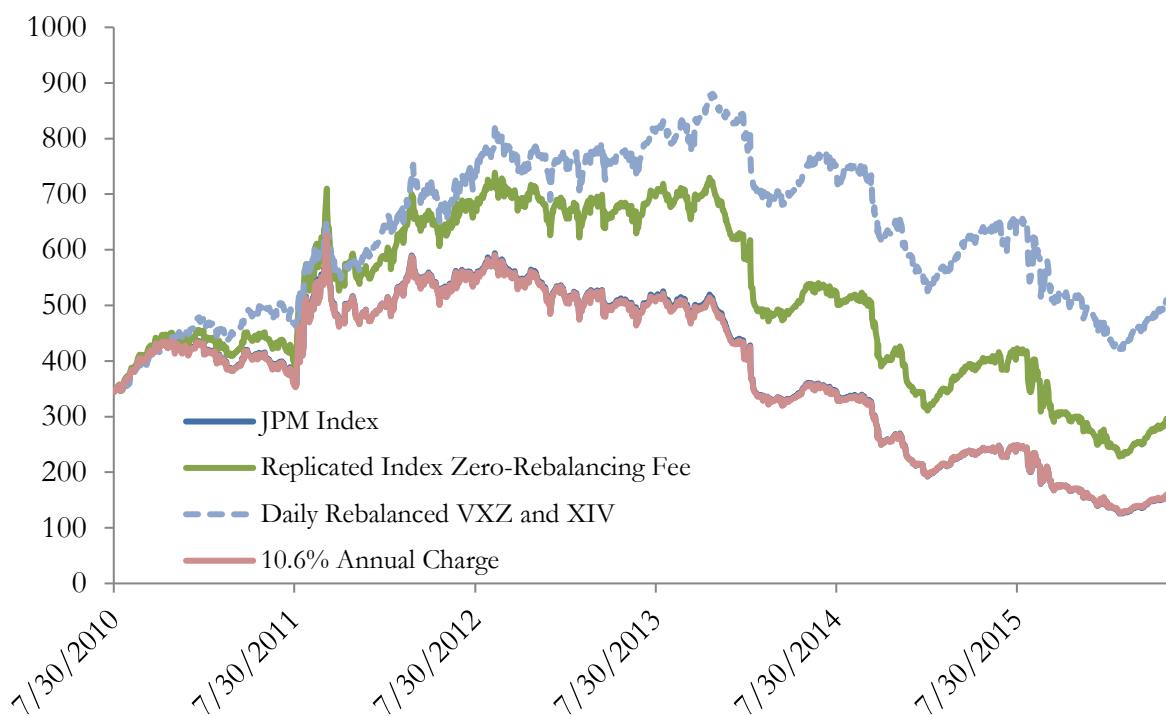
The Daily Rebalancing Amount imparts a minimum annualized deduction on the Strat Vol Index of 5%, even with the lowest R number, although it could be as high as 0.1% per day. Back-testing the data from index inception to June 2016, we find that JP Morgan could replace the Daily Rebalancing Amount by a 10.6% fixed annual deduction, similar to the 0.75% fixed annual deduction JP Morgan subtracts from the index and the resulting index levels would be within 1% of the levels derived by JP Morgan. On June 1, 2016, the JP Morgan index level is 158.57 and the index level with 10.6% fee is 159.61. As with the VOL Index, a simple fixed

annual deduction from the Strat Vol Index would have had the same impact on the index and therefore on investors as the convoluted application of the Daily Rebalancing Amount.

While Strat VOL Index is less complicated than VOL Index in that it is based on VIX futures contracts instead of differences in implied volatilities from index options, JP Morgan’s incorporation of trading costs into the index calculation through an Adjustment Factor is more complicated and its impact more variable than Bank of America’s Execution Factor.

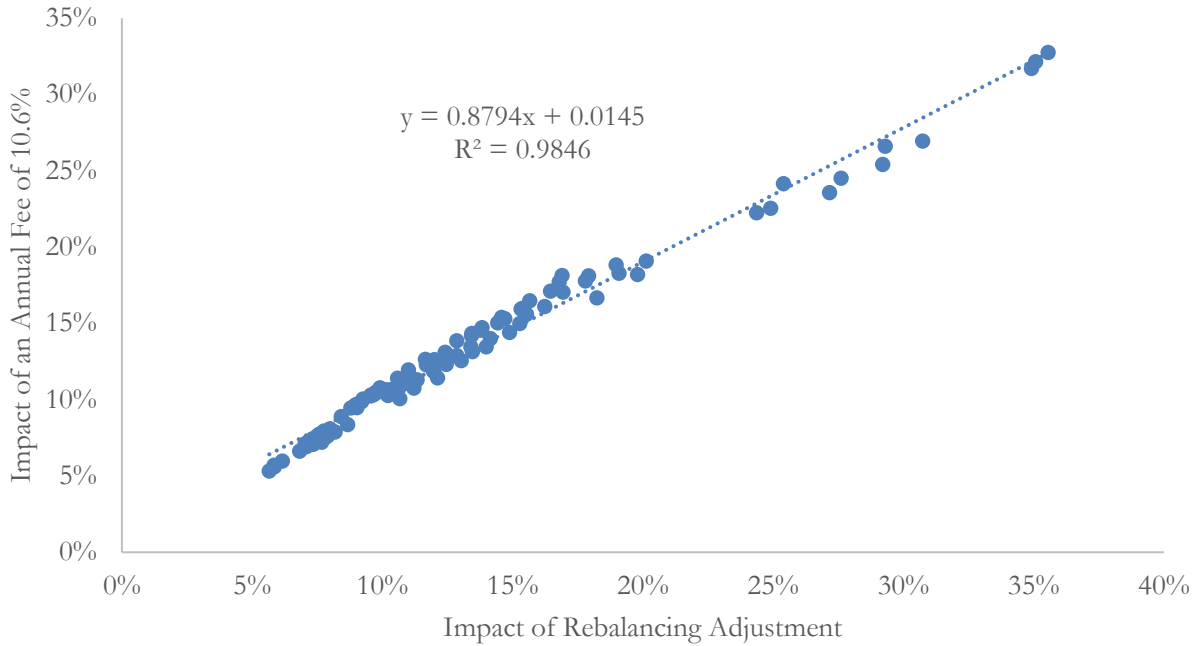
In Figure 3 we plot the Strat Vol Index as published by JP Morgan and our replication of it assuming a 10.6% annual charge applied daily. We also plot the Strat Vol Index without the Daily Rebalancing Amount deductions and the value of a portfolio of long positions in VXZ and XIV which mimics the long and short exposure in the Strat Vol Index.

Figure 3: JP Morgan Strategic Volatility Index Levels, Replicated Index with Zero-Rebalancing Fee, Daily Rebalanced Hedging Strategy, and Index with 10.6% Annual Charge.



In Figure 4 we do the regression analysis on the annual impact of the Daily Rebalancing Amount and the impact of a fixed charge of 10.6% per annum applied daily. The annual impact from 2006 to 2016 has a very high correlation with R^2 of 0.985

Figure 4: Regression Analysis on JPM Daily Rebalancing Amount and a fixed fee of 10.6%.



5. VALUATION OF STRUCTURED PRODUCTS LINKED TO VOLATILITY INDEXES

Researchers have introduced several dynamic time models for simultaneously modeling the S&P 500 index's levels and instantaneous variances.¹⁷ The models assume the stock prices follow a log-normal process and the instantaneous variances follow a mean reverting process, and those two processes are negatively correlated. Jump terms have been added to the stock prices or the variance levels to make them jumped based models.

We use the variance prediction model from Zhang, Shu, & Brenner (2010).

$$\begin{aligned} dS_t &= rS_t dt + \sqrt{V_t} S_t dB_{1t}^Q \\ dV_t &= \kappa(\theta_t - V_t) dt + \sigma_V \sqrt{V_t} dB_{2t}^Q \\ d\theta_t &= \sigma_\theta dB_{3t}^Q \end{aligned}$$

S_t is the index prices, following a geometric Brownian process. V_t is the index's instantaneous variance and it follows a square root mean reverting process. The critical

¹⁷ For a few representative examples, see Lin (2007), Lin and Chang (2009, 2010), Zhu and Lian (2012) and Zhang, Shu and Brenner, (2010).

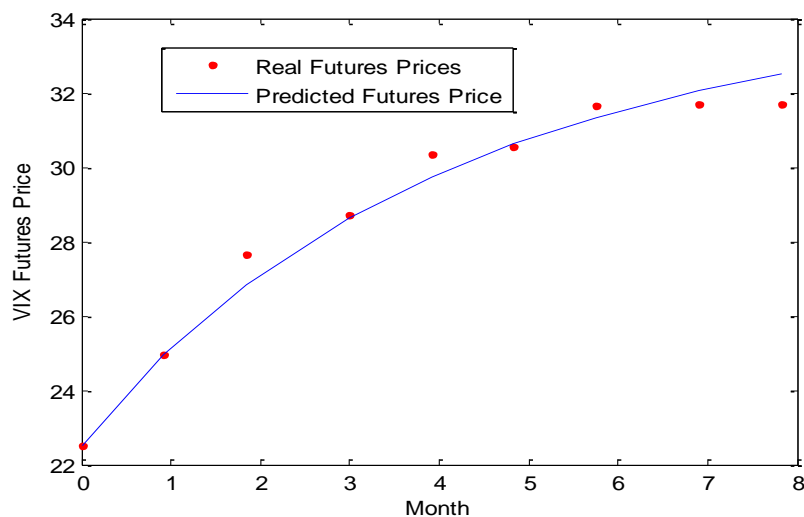
parameters for the variance model are the mean reverting speed parameter, κ , the long term mean level for the variance, θ_t , and the volatility of variance σ_V . All the parameters are calibrated with observed VIX futures prices. κ , σ_V and a uniform long term mean θ can be calibrated with historical VIX futures price data from 2004 because they are regarded as time independent. θ_t is assumed to be varying over time and it is calibrated to the VIX futures price on day t to better reflect the term structure of the futures prices on day t .

We use the parameter values $\kappa = 2.4208$ and $\sigma_V = 0.1425$ calibrated using VIX futures from 2004-2008, as presented in Zhang, Shu, & Brenner (2010). A comprehensive comparison of parameter calibrations across different volatility models can be found in Zhu & Lian (2012). The VIX level on day t is used to calculate the non-observable instantaneous variance, V_t . We calibrate the long term variance mean θ_t in our model to the VIX futures data on the trade date of each note. Once it is calibrated, our model assumes the long term mean changes with a standard deviation of $\sigma_\theta = 0.005$. Then the simulated future variance can be used to predict the implied volatility levels for options that are part of the index components.

Figure 4 shows the model calibration using the VIX Futures data on September 22, 2010. With all the parameters calibrated to the market, we simulate the daily instantaneous variances for the next several years to cover the term of the investment. The four computed spot volatility indexes are a function of daily instantaneous variances V_t and the long term variance mean θ_t viewed on the same day.¹⁸

¹⁸ The expected functional form for spot volatilities or forward volatilities futures are given in (Zhang, et al., 2010). The expected value of spot variance (spot volatility squared) is essentially regarded as a weighted average of current instantaneous variance and long term variance mean. The same functional form is used in calibrating market VIX futures.

Figure 4: VIX Futures Model Calibration



The simulated volatility levels are used to calculate projected future index, as well as the maturity payoff of the structured investment. The fair market value of the structured product is the average maturity payoff determined from the change in the simulated index less the any upfront charge and annual cost, discounted by the appropriate risk-free rate plus issuer's CDS rate.

6. BANK OF AMERICA'S VOL-LINKED STRUCTURED PRODUCTS

Bank of America issued nine 5-year structured products linked to the VOL Index between October 4, 2010 and July 5, 2011 totaling over \$150 million. When those notes matured in 2015 and 2016, investors received less than 5.5% of the issue price on average. Although the VOL Index is published by CBOE, it appears to have been created by Bank of America solely for the purpose of issuing these Bank of America's structured products. Unlike the widely referenced S&P's VIX Futures Indices, we cannot find any structured products, exchange traded products or SEC registered financial products linked to the VOL Index, other than Bank of America's structured products. We also are not aware of any futures or option contracts written on the VOL index.¹⁹ Table 2 presents a summary of those structured products, showing the total principal of \$150.8 million dollars.

¹⁹ Bank of America registered the Investable Volatility Index trademark on July 20, 2010. www.markhound.com/trademark/search/uIvwpQAq9

The structured products' maturity payoffs reflected changes in the VOL Index from when each structured note was issued to when each matured reduced by the 0.75% per annum Index Adjustment Factor, further reduced by a 2% sale charge. Effectively, investors at maturity receive 94.4% of the \$10 structured note purchase price increased or decreased by the percentage change in the VOL index over the term of the note.

We estimate the fair market values of the Strategic Return Notes linked to Bank of America's VOL Index ranged from 55 - 61% at the time of issuance, largely due to the impact of the Execution Factor. Adding back into the VOL Index the impact of 5 years' application of the Execution Factor and recalculating the issue date Fair Market Value increases the average value from 58% to 87% - still low but not out of the range of observed values on structured products with five year terms.

Table 2: Fair Market Value of Bank of America's VOL-Linked Structured Products

| CUSIP | Issue Date | Issue Size | Fair Market Value (%) | Fair Market Value |
|---------------|-------------------|----------------------|------------------------------|--------------------------|
| 06052K620 | October 4, 2010 | \$65,110,210 | 58.6% | \$38,182,759 |
| 06052K802 | November 8, 2010 | \$36,322,740 | 59.3% | \$21,554,867 |
| 06052R237 | December 3, 2010 | \$11,729,500 | 57.0% | \$6,687,480 |
| 06052R443 | December 31, 2010 | \$9,019,600 | 55.0% | \$4,958,371 |
| 06052R542 | February 7, 2011 | \$13,897,780 | 56.7% | \$7,877,998 |
| 06052R708 | March 7, 2011 | \$4,732,000 | 60.7% | \$2,874,443 |
| 06050R163 | April 4, 2011 | \$2,150,530 | 59.7% | \$1,284,880 |
| 06050R312 | May 9, 2011 | \$4,040,000 | 57.9% | \$2,337,454 |
| 06050R841 | July 5, 2011 | \$3,784,500 | 57.7% | \$2,184,250 |
| Total: | | \$150,786,860 | | \$87,942,502 |

Barclays, VelocityShares, UBS, and ProShares issued various ETPs tracking the total return versions of the S&P's VIX Futures Indices with annual fees charges ranging from 0.85% to 1.35%. These charges at the product level plus the difference between the issuers' cost of debt and the 91-Treasury yield S&P included in the S&P indices provided sufficient gross margin to cover the issuers' hedging costs and reasonable profits. Bank of America added the yield on 30-day Treasury bills - which average about 10 basis points less than the yield on 91-day Treasury bills - in the construction of the VOL. Thus that Bank of America's VOL linked structured products would have had roughly the same offering date fair market values as other VIX-related ETPs less the 7.2% per year reduction in the VOL Index resulting from the Execution Factor applied for five years in the VOL Index calculation is not surprising.

The Bank of America VOL-linked structured products were issued before the SEC began requiring issue date fair value disclosures and so it was virtually impossible for investors to know that Bank of America's structured products were worth approximately 30% less than alternatives from Barclays, VelocityShares, UBS, and ProShares.

7. JP MORGAN'S STRAT VOL-LINKED STRUCTURED PRODUCTS

JP Morgan first issued structured products linked to its proprietary Strat VOL Index and Strategic Volatility Dynamic Index in July 2011, and continued to issue those structured products in 2012, 2013, and 2014. JP Morgan issued at least 76 structured products that are linked to the Strategic Volatility Index from 2011 to 2014. The total issue size of the structured products is over \$253 million.²⁰ Table 3 lists the issue size and fair market value of the 10 largest JP Morgan structured products linked to the Strat Vol and the remaining 66 issues size and fair market value in the aggregate.

Table 3: Fair Market Value of JP Morgan's Strat Vol-Linked Structured Products

| CUSIP | Issue Date | Issue Size | JPM Estimated Value | Adjusted Estimated Value | Estimated Value (\$) |
|------------------|-------------------------|----------------------|---------------------------|--------------------------------|-------------------------|
| 48125VQU7 | 3/13/2012 | \$23,642,000 | N/A | 84.92% | \$20,076,368 |
| 48126DZM4 | 3/4/2013 | \$14,159,000 | N/A | 85.44% | \$12,097,508 |
| 48125VEG1 | 11/30/2011 | \$13,473,000 | N/A | 83.98% | \$11,315,230 |
| 48125XE93 | 8/26/2011 | \$11,151,000 | N/A | 84.81% | \$9,456,770 |
| 48125VSH4 | 3/23/2012 ²¹ | \$10,217,000 | N/A | 67.54% | \$6,900,816 |
| 48126NLV7 | 8/27/2013 | \$8,865,000 | 98.58% | 85.53% | \$7,581,856 |
| 48125VWZ9 | 5/25/2012 | \$8,173,000 | N/A | 84.60% | \$6,914,587 |
| 48125VB58 | 6/26/2012 | \$7,387,000 | N/A | 84.69% | \$6,256,232 |
| 48125VPS3 | 3/27/2012 | \$7,174,000 | N/A | 85.11% | \$6,105,940 |
| 48125XYT7 | 7/26/2011 | \$6,503,000 | N/A | 85.39% | \$5,552,743 |
| 66 Smaller Notes | | \$142,950,130 | N/A | 84.95% | \$121,438,487 |
| Total: | | \$253,694,130 | | 84.23% | \$213,696,536 |

²⁰ JP Morgan issued at least \$32 million of structured notes linked to another Strategic Volatility Dynamic Index from 2012 to 2013.

²¹ This is the only structured note issued with a term of 3-year, and the terms of the other notes are 2-year or less.

JP Morgan issued \$109,550,130 of Strat Vol-linked structured products before the SEC's April 13, 2012 letter to issuers about, amongst other things, disclosure of issue date estimated values. JP Morgan issued another \$103,061,000 in Strat Vol linked structured products before it started putting an issue date estimated value on the offering documents. Only \$41 million of the \$254 million Strat Vol linked structured products were issued after JP Morgan started including estimated issue date values.

JP Morgan's estimated values have little relationship to the actual issue date values of the Strat VOL-linked structured products because JP Morgan excluded the Rebalancing Adjustment Amount from its valuations.

JPMS's estimated value reflects the index fee that will accrue on a daily basis over the term of the notes. The other adjustments to the level of the Index do not impact JPMS's estimated value.²²

The only "other adjustments" to the level of the Index is the Rebalancing Adjustment Amount. JP Morgan's statement could be mis-interpreted to mean the other adjustments don't effect the value of the notes when what it actually means is literally that it doesn't impact JP Morgan's estimate value because JP Morgan does not take into account the material, negative impact of the Rebalancing Adjustment Amount on the Index and therefore on the future payoffs and issue date estimated value of the notes. This is analogous to reporting an issue date estimated value of a reverse convertible but not including the readily quantifiable value of the embedded put option. Of course, that estimated value would be of a coupon note, not a reverse convertible.

As we demonstrated above, the Rebalancing Adjustment Amount reduces the Strat VOL index and therefore the payoffs to JP Morgan's structured products by at least 4.8% in every possible state of the world and on average by 10.6% per year. Thus, JP Morgan overstates the value of its Strat VOL-linked notes with a 15 month term by at least 6% *with certainty* when it reports an estimated value of \$987.64 per \$1,000 and states. Accepting JP Morgan's modeling of the VIX term structure and other assumptions but simply incorporating the Rebalancing Adjustment Amount, yields an 84.23% average issue date value. Most of the notes have 15 month terms. Taking into account the term of each note, the weighted average annual cost embedded in the JP Morgan Strat Vol Notes was 12.1%. These are even higher than the average annual costs in Bank of America's VOL-linked notes.

²² See sp.jpmorgan.com/document/cusip/48126N3A3/doctype/Product_Termsheet/document.pdf.

8. CONCLUSION

In structured products' early days, issuers issued, underwriters underwrote and index providers provided indexes. In the 1990s investment banks began issuing debt which looked a lot like the convertible debt they had previously underwritten for operating companies. This allowed for a proliferation of structured products but also created additional conflicts of interest as the underwriter/issuer was not held to account for securities losses as operating companies who issued convertible debt to investors were held to account for losses on the securities they issued.

The evolution of structured products continued with ever more complex structures tied to stocks, indexes, commodities and baskets and then with proprietary indices including the two VIX derived indices discussed herein. When brokerage firms include hypothetical trading costs in their proprietary indices – costs that are absent from third-party indices – they make comparison of disclosed costs at the structured product level uninformative. Even when issuers are required to report issue date values, those values are uninformative if the issuer can value a structured product based on an index that includes significant hypothetical costs but assume for purposes of calculating an estimated value that the index was going to be calculated with no trading costs thereby significantly inflating the value of the structured product. This mischief would not be possible if issuers linked to indexes provided by third-party vendors who had no interest in the payoffs from structured products linked to their indexes.

References:

- Carr, Peter and Liuren Wu, “A Tale of Two Indices” *Journal of Derivatives*, 2006, 13(3), 13-29.
- Deng, Geng, Craig McCann and Olivia Wang, “Are VIX Futures ETPs Effective Hedges?” with, 2012, *Journal of Index Investing*, 3(3):35-48, Winter 2012.
- Lin, Yueh-Neng. “Pricing VIX futures: Evidence from integrated physical and risk-neutral probability measures”, *Journal of Futures Markets*, 27(12):1175-1271, 2007.
- Lin, Yueh-Neng and Chien-Hung Chang, “VIX Option Pricing” *Journal of Futures Markets* 29(6): 523-543, 2009.
- Lin, Yueh-Neng and Chien-Hung Chang, “Consistent Modeling of S&P 500 and VIX Derivatives” *Journal of Economic Dynamics and Control* 34(11):2302-2319, 2010.
- Zhu, Song-Ping and Guanghua Lian, “Pricing Vix Options with Stochastic Volatility and Random Jumps” *Rivista di Matematica per le Scienze Economiche e Sociali* 36(1), 2012.
- Zhang, Jin E., Jinghong Shu, and Menachem Brenner, “The New Market For Volatility Trading”, *The Journal of Futures Markets*, Vol. 30, No. 9, 809-833 (2010).